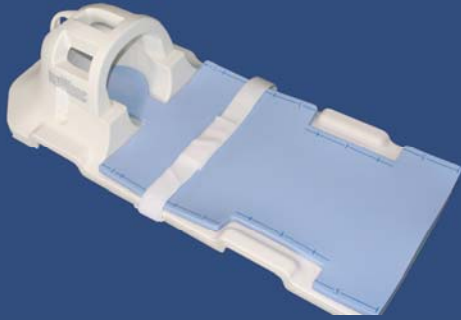


Pediatric Array



Model 801
GE Signa® LX (4 CH)
Model 808
GE Excite® (8 CH)

Description

Our patented 18 element quadrature array includes an eight-element volumetric section for imaging pediatric brains, and a curvilinear section for imaging the entire spinal process of children up to 4 feet (122cm) tall with head diameters up to 7.5 inches (19cm). The patient lies on the curvilinear surface with head inserted into the volumetric section. Viewports in the head section allow the patient to see or be observed. This is a receive-only coil.

Suggested Clinical Applications

- Pediatric scanning without moving the patient, and as allowed by the MRI system
- Pediatric brain imaging
- Pediatric C-Spine, T-Spine, and L-Spine imaging
- MRA
- Parallel imaging compatible

Product Specifications

- **Field Strengths:**
1.0T, 1.5T, 3.0T
- **Number of Elements:** 18
- **Weight:** 23 lbs (10.4 kg)
- **Ship Weight:** 35 lbs (15.9 kg)
- **Cable Length:** 36 in (91 cm)
- **Quality Factor (Q):**
Unloaded: 260 @ 64 MHz
Loaded: 40 @ 64 MHz
- **Region of Sensitivity:**

X	Y	Z
34 cm	14 cm	75 cm

- **Physical Size:**

R/L	A/P	S/I
41 cm	29 cm	103 cm

Warranty/Repair Policy

Product is warranted to be free from defects in materials and workmanship for a period of two (2) years from date of purchase. Typical turn-around time for repair/replacement of defective part(s) is 48 hours after receipt of defective product. Please see the published warranty for details.

System Compatibility

GE Excite®, GE Excite® HD, GE Excite® HDx, GE Signa® LX (4CH), and others. Contact your ScanMed sales representative for details.

Quality Assurance

All products are designed and manufactured under an ISO 13485/9001 registered quality system.



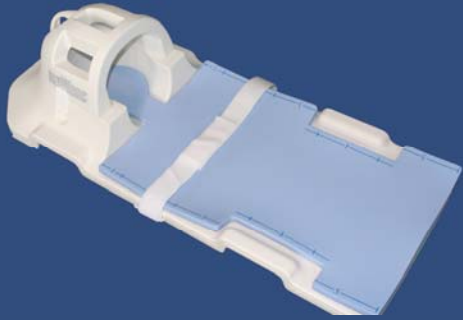
Manufacturer

ScanMed of Resonance Innovations LLC
Authorized Distributor
Radiology OneSource
coils@radiologyonesource.com

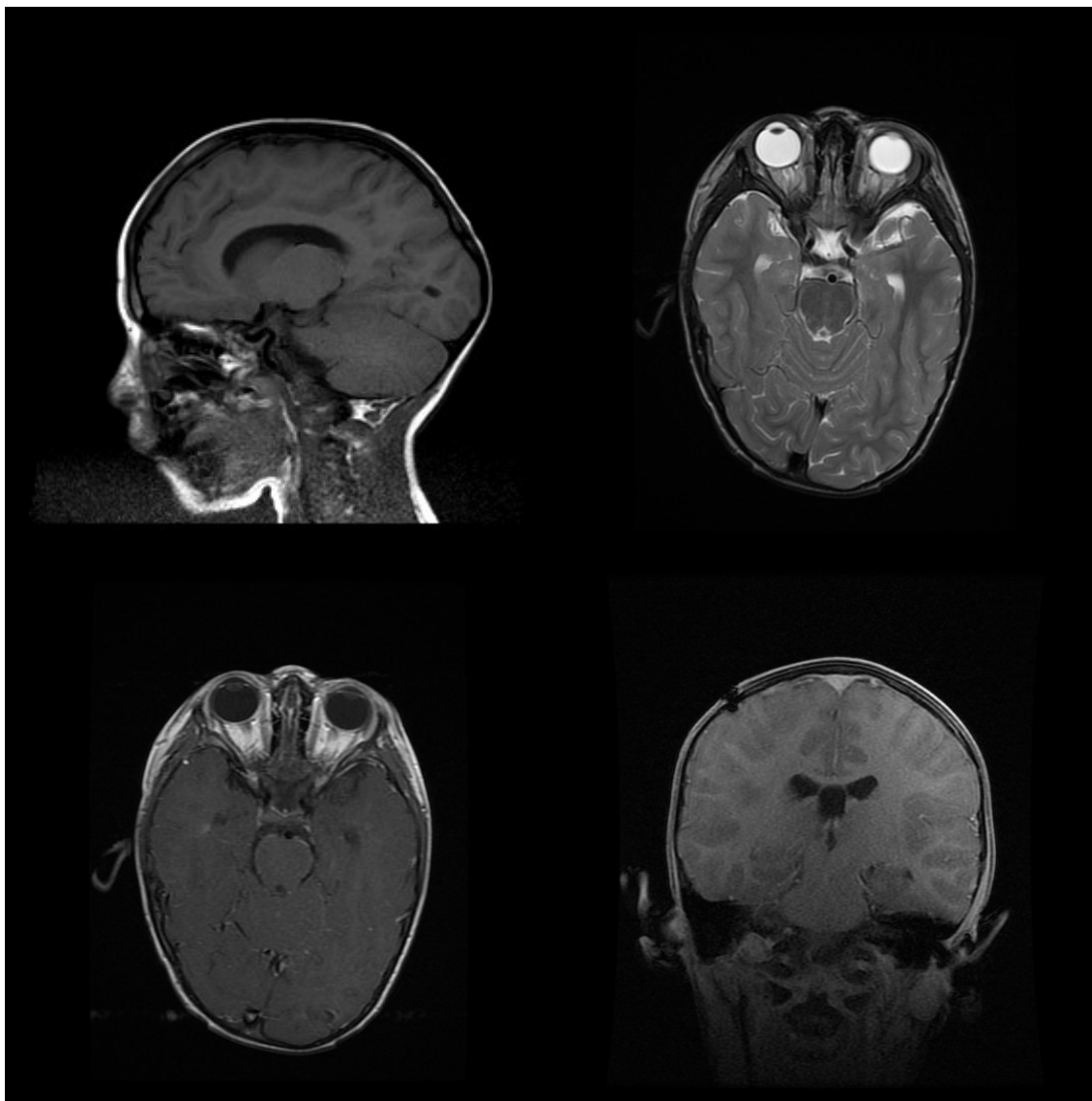


+1.615.577.1726
Franklin, TN 37067 USA
www.radiologyonesource.com

Pediatric Array



Model 801
GE Signa® LX (4 CH)
Model 808
GE Excite® (8 CH)



Manufacturer

ScanMed of Resonance Innovations LLC

Authorized Distributor

Radiology OneSource
coils@radiologyonesource.com

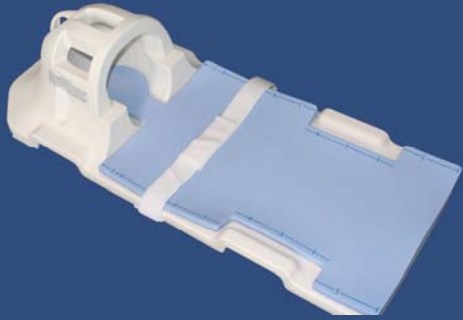
Radiology
OneSource

+1.615.577.1726

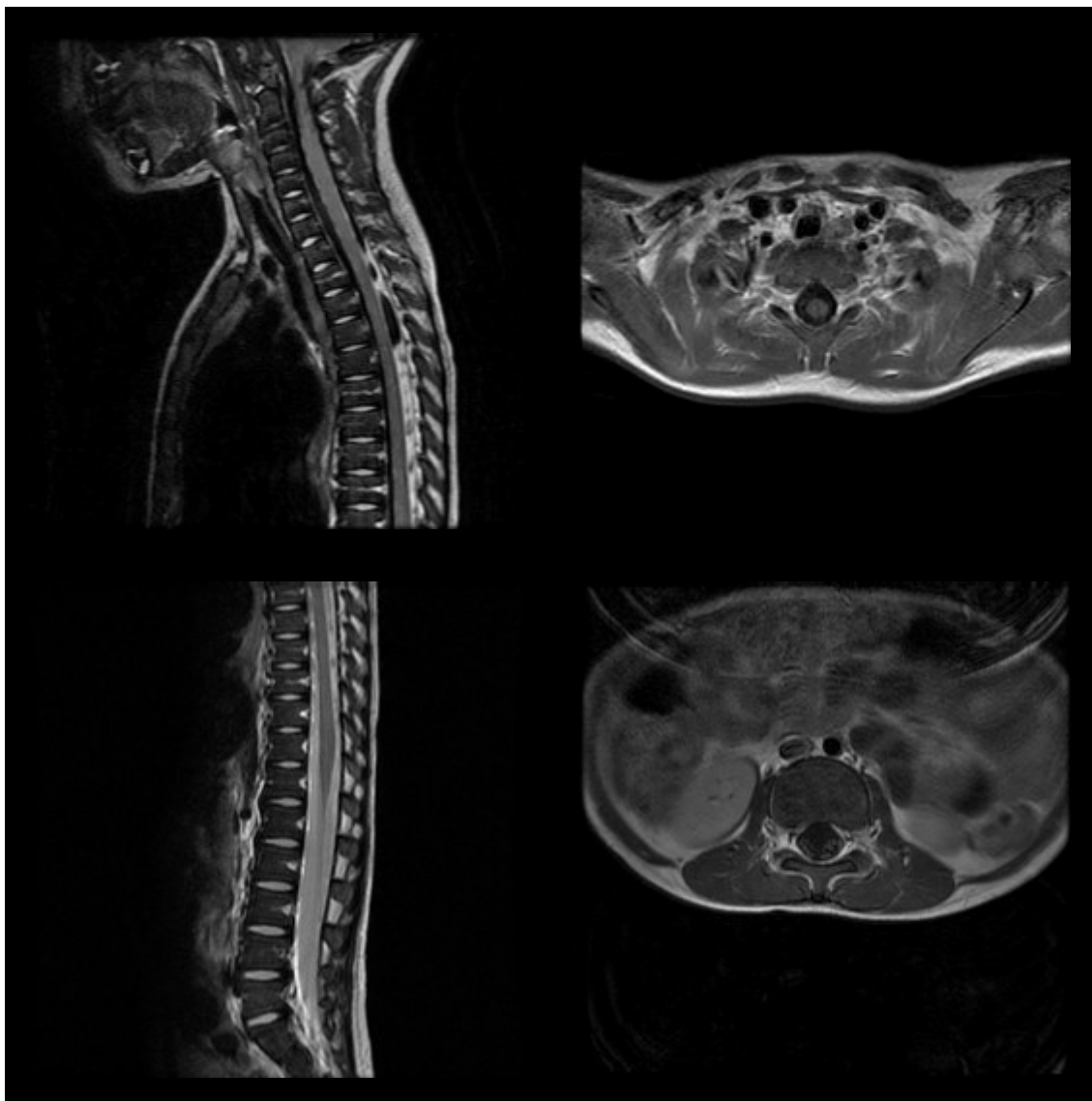
Franklin, TN 37067 USA

www.radiologyonesource.com

Pediatric Array



Model 801
GE Signa® LX (4 CH)
Model 808
GE Excite® (8 CH)



Manufacturer
ScanMed of Resonance Innovations LLC
Authorized Distributor
Radiology OneSource
coils@radiologyonesource.com



+1.615.577.1726
© 2007 Resonance Innovations LLC
MB808GE01-R3.3 (10/13/08) RJ